



RETAIL • OFFICE • SALES • LEASING • PROPERTY MANAGEMENT



6830

La Jolla Blvd
La Jolla, California 92307

OFFICE OVER RETAIL
AT THE ENTRANCE
OF DOWNTOWN LA JOLLA

CORNER OF
LA JOLLA BLVD &
BONAIR STREET

Harman Realtors, Inc.
Office: 858.454.0101 x101
athena@harmanrealtors.com

7825 Fay Ave.
Suite 320
La Jolla, CA 92037

Athena Z. Harman
CCIM, CSM, CPM
858-454-0101 X101
CA License # 00593611

PROPERTY DETAILS

Location: 6830 La Jolla Boulevard
La Jolla, CA 92037

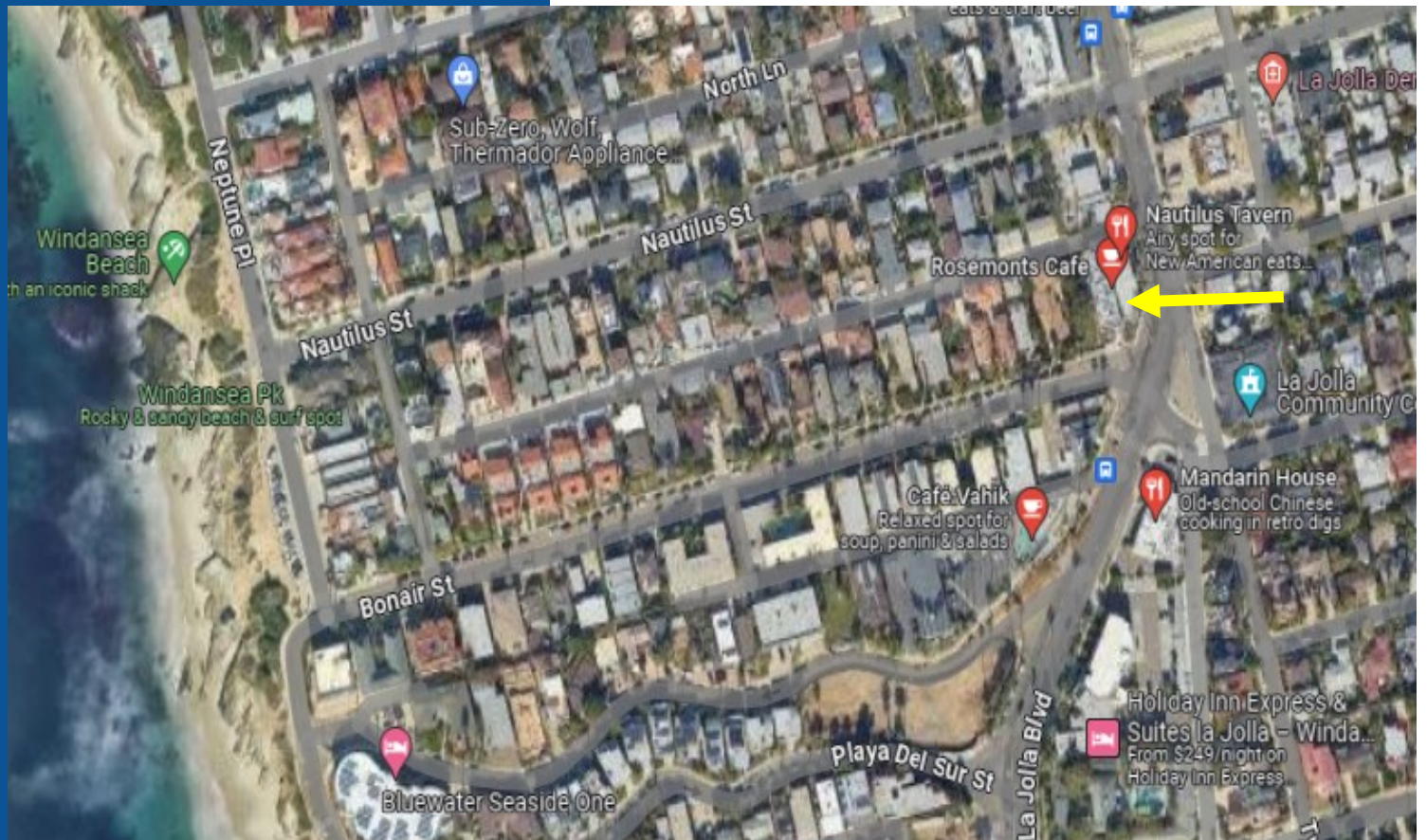
Space: 11,940 square feet



PROPERTY HIGHLIGHTS

- Office over retail at the entrance of downtown La Jolla
- Nautilus Tavern, Rosemontes Café, and Salti Cali
- One floor of underground parking
- One block to Wind n' Sea Surfing Beach

PROPERTY LOCATION



6830 La Jolla Boulevard, La Jolla, CA 92037

APN: 351-350-25-00

Athena Z. Harman

CCIM, CSM, CPM

858-454-0101 X101

CA License # 00593611

Harman Realtors, Inc.

Office: 858.454.0101 x101

athena@harmanrealtors.com

7825 Fay Ave.

Suite 320

La Jolla, CA 92037